

Anton Kern Gallery

Brian Calvin: Early Work June 30 – August 19, 2016



Brian Calvin

Untitled, 1994

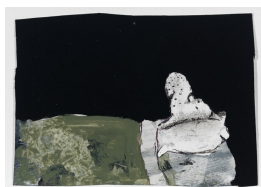
Acrylic and watercolor on paper
9 1/2 x 9 in (24.13 x 22.86 cm) (paper); 12
1/4 x 12 in (31.11 x 30.48 cm) (framed)
signed and dated on reverse
(ak#12574)



Brian Calvin

Untitled, 1992

Acrylic and ballpoint pen on paper
6 x 4 1/4 in (15.24 x 10.79 cm) (paper); 8 x
6 in (20.32 x 15.24 cm) (framed) signed
and dated on reverse
(ak#12569)



Brian Calvin

Untitled, 1992

Acrylic and ballpoint pen on paper
4 1/4 x 6 in (10.79 x 15.24 cm) (paper); 6 x
8 in (15.24 x 20.32 cm) (framed) signed
and dated on reverse
(ak#12570)



Brian Calvin

Untitled, 1991

Oil on paper

4 x 6 in (10.16 x 15.24 cm) (paper);

6 x 8 in (15.24 x 20.32 cm) (framed)

signed and dated on reverse

(ak#12573)



Brian Calvin

Untitled, 1992

Ink and acrylic on paper

6 x 4 in (15.24 x 10.16 cm) (paper);

8 x 6 in (20.32 x 15.24 cm) (framed)

signed and dated on reverse

(ak#12572)



Brian Calvin

Untitled, 1992

Gouache on paper

5 3/4 x 4 1/2 in (14.6 x 11.43 cm) (paper);

7 1/2 x 6 1/2 in (19 x 16.51 cm) (framed)

signed and dated on reverse

(ak#12571)

NFS



Brian Calvin

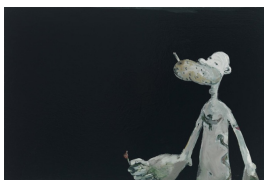
Shore Leave, 1992

Oil on canvas

38.25 x 26.5 inches

(97.15 x 67.31 cm)

(ak#12566)



Brian Calvin

New Tattoo, 1992

Oil on canvas

26 x 38.5 inches

(66.04 x 97.79 cm)

(ak#12567)



Brian Calvin
Untitled (Popeye), 1992
Oil on canvas
26 x 38 1/2 inches
(66.04 x 97.79 cm)
(ak#12568)