



**Frieze New York**  
**Booth A2**  
**May 7 - 11, 2025**

**Anton Kern Gallery**





**Anne Collier**

*Unraveling*, 2024

C-print

Framed: 95 1/8 x 50 1/8 x 2 inches  
(241.6 x 127.3 x 5.1 cm)

Edition of 5 plus 2 APs





**Alvaro Barrington**

*Carnival Truck 2024*, 2024

Acrylic and Flashe on burlap

74 3/8 x 83 7/8 inches

189 x 213 cm





**Nicole Eisenman**

*Maquette: Sketch For a Fountain (Reclining Figure)*, 2018

Bronze

35 x 40 x 18.5 inches

(88.9 x 101.6 x 47 cm)

Edition of 4 and 2 AP





**Jim Lambie**  
*Metal Box (Palermo)*, 2025  
Polished steel, aluminum sheets and gloss paint  
24 5/8 x 24 5/8 x 7 5/8 inches  
(62.5 x 62.5 x 19.5 cm)





**Jim Lambie**

*Starburst*, 2024

Sunglass lens, lead came

39 x 26 3/4 x 1 3/4 inches

(99 x 68 x 4.5 cm)





**Mike Silva**  
*Lights*, 2025  
Oil on linen  
86 5/8 x 59 inches  
(220 x 150 cm)







**Lloyd Foster**

*Miracle Arena, 2025*

Oil pastel, watercolor, crayon

Framed: 43 x 56 1/2 inches

(109.2 x 143.5 cm)



**Wilhelm Sasnal**

*Untitled (Highway Underpass)*, 2024

Oil on canvas

20 x 24 inches

(50.8 x 61 cm)





**David Shrigley**

*Boots*, 2010

Ceramic

12 1/8 x 12 1/2 x 17 inches

(30.8 x 31.8 x 43.2 cm)





**Paweł Althamer**  
*Wędrowiec (Wanderer)*, 2024  
Glazed ceramic  
17 3/4 x 11 3/4 x 11 3/4 inches  
(45 x 30 x 30 cm)





**Aliza Nisenbaum**  
*Amaryllis in Red*, 2025  
Oil on dibond  
72 x 36 inches  
(182.9 x 91.4 cm)



**Yuli Yamagata**  
*Three Flags Ikebana*, 2024  
Silk, bamboo, glazed ceramic, papier-mâché,  
epoxy resin, anti-UV spray  
29 1/8 x 11 3/4 x 13 3/4 inches  
(74 x 30 x 35 cm)





**Yuli Yamagata**

*Time Machine Chair*, 2024

Aluminum

35 3/8 x 16 7/8 x 26 3/4 inches

(90 x 43 x 68 cm)

Edition of 2





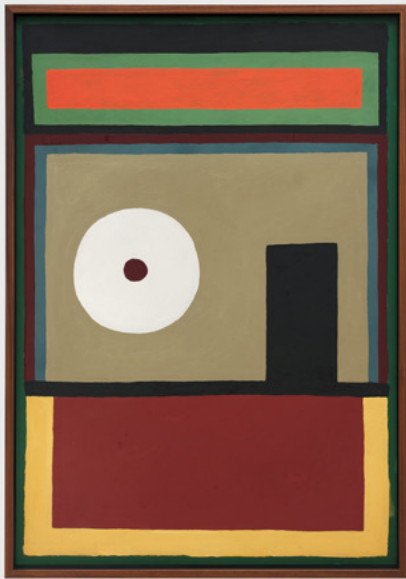
**Yuli Yamagata**  
*Pizza Stool*, 2024  
Aluminum  
18 7/8 x 15 3/4 x 15 3/4 inches  
(48 x 40 x 40 cm)  
Edition of 2











**Nathalie Du Pasquier**

*Untitled, 2019*

Oil on paper

Overall Framed dimensions: 91 3/8 x 28 7/8 inches  
(232 x 73.3 cm)







**Alessandro Pessoli**  
*The Sphinx*, 2012  
Painted maiolica  
20 x 13 x 11 inches









**Liz Larner**

*Blackbird (inflexion)*, 2020

Ceramic, glaze

21 x 34 x 6 inches

(53.3 x 86.4 x 15.2 cm)







**Ellen Berkenblit**

*Birds, Dogs, Cats, 2025*

Initialed and dated on verso

Gouache on paper

30 x 22 inches

(76.2 x 55.9 cm)

**Francis Upritchard**  
*Tall Toothpaste Jar*, 2018  
Long Beach Clay with Hippy white exterior  
and Amber Celadon Interior Glaze  
15 x 11.5 x 8 inches  
(37.5 x 29 x 24 cm)







**Roxanne Jackson**

*Lizard Brain*, 2018

Ceramic, glaze, luster and faux fur

17 x 10 x 8 inches

(43.2 x 25.4 x 20.3 cm)



**Matthew Monahan**

*Untitled, 2025*

Plaster

27 x 19 1/2 x 2 1/4 inches  
(68.6 x 49.5 x 5.7 cm)









**Andrew Sim**

*Portrait of a monkey puzzle with stars and tulips, 2024*

Pan pastel on canvas

63 x 39 3/8 inches

(160 x 100 cm)





**Andrew Sim**

*Portrait of two red horses with rainbows and stars, 2025*

Pan pastel on paper

Framed: 16 1/2 x 23 1/4 inches

(41.9 x 59.1 cm)

**Marcus Jahmal**  
*Untitled*, 2024  
Colored pencil on paper  
Framed: 28 1/4 x 21 3/4 x 1 1/2 inches  
(71.8 x 55.2 x 3.8 cm)





I WOULD HAVE  
PREFERRED A  
TUNNEL



**David Shrigley**

*Untitled (I Would Have Preferred a Tunnel)*, 2025

Acrylic on paper

29 3/4 x 21 5/8 inches

(75.5 x 55 cm)

**John Bock**  
*Untitled (Alice Cooper), 2012*  
Paper, ink and cardboard on pringles package  
23 3/8 x 10 5/8 x 8 inches







**Hein Koh**

*Sinking Ship*, 2025

Acrylic, oil and oil stick on canvas

34 x 52 inches

(86.4 x 132.1 cm)



**Brian Calvin**

*Somebody People*, 2024

Acrylic on canvas

48 x 60 inches

(121.9 x 152.4 cm)





**Nobuyoshi Araki**

*Tokyo Nude (33)*, 1989

Silver gelatin print

15 1/2 x 12 3/4 in (each image paper)

23 1/2 x 36 in (diptych framed)

**Lara Schnitger**  
*Mary*, 2023  
Fabric collage on canvas  
32 x 26 inches  
(81.3 x 66 cm)









**Anne Collier**

**Jochen Lempert**

**Matthew Monahan**

Opening May 6

**Kamrooz Aram at WINDOW**

Opening May 9