

# Anton Kern Gallery

## Michael Joo



**Michael Joo**  
*Cradle*, 2009  
Cast urethane, steel and acrylic enamel paint  
22 x 42 x 27 inches  
(AK#6853)



**Michael Joo**  
*Strappado*, 2009  
Cast urethane, steel and acrylic enamel paint  
23 x 38 x 22 inches  
(AK#6855)



**Michael Joo**  
*Future Perfect (Dulcinea)*, 2009  
Authentic flight suit from Battleship Galactica TV series, mannequin, live-feed video cameras, monitors, fluoroscopic video image, electronics  
82 x 30 x 46 inches  
(AK#7205)



**Michael Joo**  
*Faceted Composition #1b*, 2008  
Acrylic, ink, pencil, black tea, UV stable gel medium on canvas  
60 x 48 1/4 inches  
(AK#7206)



**Michael Joo**  
*Faceted Composition #2*, 2008  
Acrylic, ink, pencil, black tea, UV stable gel medium on canvas  
60 x 48 1/4 inches  
(AK#7207)



**Michael Joo**  
*Faceted Composition #3*, 2008  
Acrylic, ink, pencil, black tea, UV stable gel medium on canvas  
60 x 48 1/4 inches  
(AK#7208)

# Anton Kern Gallery



**Michael Joo**

*Faceted Composition #4*, 2008

Acrylic, ink, pencil, black tea, UV stable gel medium on canvas

60 x 48 1/4 inches

(AK#7209)



**Michael Joo**

*Pork (Secreted-Secreted)*, 2009

Stainless steel, nylon webbing, cicada larval shell

27 1/2 x 35 x 27 1/2 inches

Edition of 2 and 2 AP

(AK#7210)



**Michael Joo**

*A Woman Under the Influence*, 2008

Oil paint, UV oil-based inks on canvas

59 x 80 inches

(AK#7211)



**Michael Joo**

*A Piece of Paradise*, 2008

Oil paint, UV oil-based inks on canvas

59 x 80 inches

(AK#7212)



**Michael Joo**

*Husbands*, 2008

Oil paint, UV oil-based inks on canvas

60 x 80 inches

(AK#7213)



**Michael Joo**

*A Pair of Boots*, 2008

Oil paint, UV oil-based inks on canvas

60 x 80 inches

(AK#7214)



**Michael Joo**

*Flawed / Empowered*, 2009

Cast urethane, steel and acrylic enamel paint

40 x 70 x 20 inches

(AK#7215)



**Michael Joo**

*Swiss Roll*, 2008

Cast urethane, acrylic enamel paint and steel

20 x 45 x 21 inches

(AK#7216)

# Anton Kern Gallery



**Michael Joo**  
*Felled/Held*, 2009  
Cast urethane, acrylic enamel paint and steel  
31 x 27 x 20 inches  
(AK#7217)



**Michael Joo**  
*Godseye 1*, 2008  
Cast urethane, acrylic enamel paint and steel.  
31 x 29 x 31 inches  
(AK#7218)



**Michael Joo**  
*Anemone*, 2009  
Bronze, patina and enamel paint, steel base  
73 x 50 x 34 inches  
Edition of 3 and 1 AP  
(AK#7219)



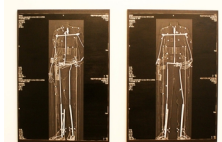
**Michael Joo**  
*Stubbs (Absorbed)*, 2009  
Bronze, patina  
73 1/2 x 83 x 44 inches  
Edition of 3 and 1 AP  
(AK#7220)



**Michael Joo**  
*Doppelganger (Pink Rocinante)*, 2009  
Bronze and enamel paint  
77 x 76 x 44 inches  
Edition of 3 and 1 AP  
(AK#7221)



**Michael Joo**  
*Consistent-Seen-Touched*, 2009  
Stainless steel, bronze and patina (walnut and stainless steel base)  
12 1/2 x 67 x 47 inches  
Edition of 6 and 2 AP  
(AK#7222)



**Michael Joo**  
*Future Imperfect Diptych*, 2009  
Oil on canvas on archival ink jet  
72 x 54 inches each  
(AK#7224)

# Anton Kern Gallery



**Michael Joo**  
*Knot 2*, 2008  
Cast urethane, acrylic enamel paint and steel  
(AK#7229)



**Michael Joo**  
*Tress*, 2009  
Cast urethane, acrylic enamel paint and steel  
(AK#7230)