

Anton Kern Gallery

Richard Hughes



Richard Hughes

Shut Down 1, 2010

Fiber glass, polyester resin, iron powder and acrylic paint

96 x 36 1/2 inches

Paper Dimensions:

96 x 36.5 inches

(AK#7543)



Richard Hughes

Shut Down 2, 2010

Fiber glass, polyester resin, iron powder and acrylic paint

95 x 96 inches

Paper Dimensions:

95 x 96 inches

(AK#7544)



Richard Hughes

Dead Flies, 2010

Cast polyurethane resin, stitched canvas, shoe laces, cable, enamel and acrylic paint

Dimensions variable

Paper Dimensions:

645 x 84 inches

(AK#7545)



Richard Hughes

Chapel Perilous, 2010

Glass, cast polyurethane, plastic, vinyl, paint and electric lights

126 x 131 1/2 inches

(320.04 x 334.01 cm)

(AK#7546)



Richard Hughes

Jimmy Jimmy, 2010

Clay-tiles, plaster board, paper, wood, paint, vinyl tiles, carpet and cork

264 1/2 x 195 x 11 inches

Paper Dimensions:

264.5 195.5 x 11 inches

(AK#7547)



Richard Hughes

Blue Heaven, 2010

Bronze and enamel paint

Variable dimension

Paper Dimensions:

Variable

(AK#7548)

Anton Kern Gallery



Richard Hughes

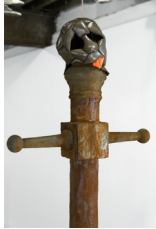
The Maligner, 2010

Fiberglass, polyester resin, polyurethane resin and iron powder

127 x 26 1/2 inches

(322.6 x 67.3 cm)

(AK#7549)



Richard Hughes

The Maligner, 2010

Fiberglass, polyester resin, polyurethane resin and iron powder

132 x 26 1/2 inches

(335.3 x 67.3 cm)

(AK#7550)