

Anton Kern Gallery

Lothar Hempel: Suedehead



Lothar Hempel

Kunstschnee will schmilzen (Artificial Snow Wants to Melt), 1998

Paper, ink, wood and florescent lights

105 x 120 x 59 inches

105 x 120 x 59 inches (installation)

(266.7 x 304.8 x 149.9 cm)

(AK#6160R)



Lothar Hempel

Acid and Iron, 2011

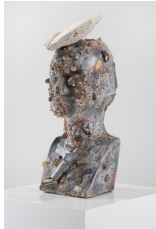
Photograph on metal, steel, paint, stones, light bulb and MDF

77 1/8 x 78 3/4 x 104 inches

77 1/8 x 78 3/4 x 104 inches (installation)

(196 x 200 x 264.2 cm)

(AK#8604)



Lothar Hempel

Youth, 2011

Coins, shells, battery, stones and steel on cement

Dimensions:

18 x 8 x 7 inches

(45.7 x 20.3 x 17.8 cm)

(AK#8605)



Lothar Hempel

Plakat (Jump), 2011

Steel rods and screen-printed steel on powder-coated board

102 x 102 inches

102 x 102 inches (framed)

(259.1 x 259.1 cm)

(AK#8606)



Lothar Hempel

Plakat (Echo), 2011

Steel rods and screen-printed steel on powder-coated board

102 x 102 inches

102 x 102 inches (framed)

(259.1 x 259.1 cm)

(AK#8607)



Lothar Hempel

Plakat (Mondkrank), 2011

Gold leaf, steel and screen-printed copper on powder-coated board

102 x 102 inches (framed)

(259.1 x 259.1 cm)

(AK#8608)

Anton Kern Gallery



Lothar Hempel

Full Moon, 2011

Acrylic, oil, color pencil and pigment ink on aluminum

45 3/4 x 44 3/4 inches

45 3/4 x 44 3/4 inches (framed)

(116.2 x 113.7 cm)

(AK#8609)



Lothar Hempel

Button, 2011

Acrylic, oil, spray paint, color pencil and pigment ink on aluminum

40 1/8 x 30 1/4 inches

40 1/8 x 30 1/4 inches (framed)

(101.9 x 76.8 cm)

(AK#8611)



Lothar Hempel

Blush, 2011

Acrylic, oil, color pencil and pigment ink on aluminum

48 x 36 1/2 inches

48 x 36 1/2 inches (framed)

(121.9 x 92.7 cm framed)

(AK#8612)



Lothar Hempel

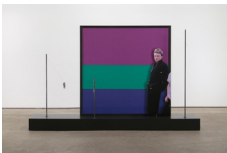
Pub Brawl, 2011

Acrylic, oil, color pencil and pigment ink on aluminum

48 x 59 3/4 inches (framed)

(121.9 x 151.8 cm)

(AK#8613)



Lothar Hempel

Shoplifter and Shop Window, 2011

Watch, steel, black copper wire, mounted photo, MDF and stretched polyester

70 3/4 x 114 1/2 x 23 3/4 inches

70 3/4 x 114 1/2 x 23 3/4 inches (Installation)

(179.7 x 290.8 x 60.3 cm)

(AK#8614)



Lothar Hempel

East End, 2011

Cast cement, fuse, shell, plastic, watch, paper, ink, magnet, steel, aluminum, copper wire and seed pod

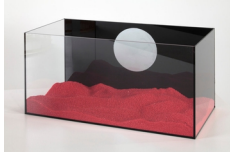
56 3/8 x 32 3/4 x 26 1/2 inches

56 3/8 x 32 3/4 x 26 1/2 inches (installation)

(143.2 x 83.2 x 67.3 cm)

(AK#8615)

Anton Kern Gallery



Lothar Hempel
Untitled (Fish Tank), 2011
Glass, acrylic, spray paint and red sand
30 x 60 x 60 cm
11.81 x 23.62 x 23.62 inches
(30 x 60 x 60 cm)
(AK#8616)



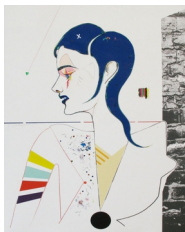
Lothar Hempel
Untitled (Bird Cage), 2011
Wicker and synthetic plaster cast
56 x 36 x 36 cm
22.05 x 14.17 x 14.17 inches
(56 x 36 x 36 cm)
(AK#8617)



Lothar Hempel
Untitled (Moon), 2011
Oxidized steel and copper wire
63.5 x 63.5 cm
25 x 25 inches
(63.5 x 63.5 cm)
(AK#8618)



Lothar Hempel
Gala VI, 2011
Unique
C Print on Kodak metallic paper
12.4 x 12.4 inches (framed)
(31.5 x 31.5 cm)
(AK#8622)



Lothar Hempel
Ace, 2011
Acrylic, oil, colored pencil, and pigment ink on aluminum
Framed Dimensions: 57 3/4 x 44 inches
(146.7 x 111.8 cm)
(AKP#8610)