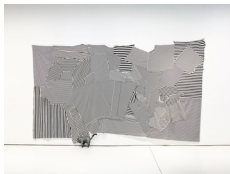


# Anton Kern Gallery

Richard Hughes, The Great Perhaps  
November 7 – December 21, 2019



**Richard Hughes**  
*Dblvsn*, 2018  
Painted fibreglass  
16.93 x 4 x 4 in (each)  
43 x 10 x 10 cm  
(AK#15417)



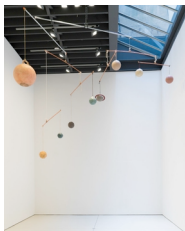
**Richard Hughes**  
*Cats On Drugs*, 2019  
Stitched fabric, polyester, resin, cast fiberglass  
112 x 176 in  
284.5 x 447 cm  
(AK#17104)



**Richard Hughes**  
*Man Is Lost*, 2019  
Printed t-shirts, coat hangers, polyester, resin, fiberglass  
156 x 106 in  
396.2 x 269.2 cm  
(AK#17105)



**Richard Hughes**  
*Blind Assassin*, 2019  
Polyester, resin, cast fiberglass  
Dimensions variable  
(AK#17100)



**Richard Hughes**  
*Wandering and Wondering*, 2019  
Polyester, resin, cast fiberglass, copper pipe, galvanized steel pipe, various cords, hair, chains  
Dimensions variable  
(AK#17099)

# Anton Kern Gallery



**Richard Hughes**

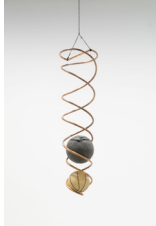
*God! Show Me Magic!*, 2019

Polyester, resin, cast fiberglass

68 x 48 x 10 in

172.7 x 121.9 x 25.4 cm

(AK#17103)



**Richard Hughes**

*Mind Hole*, 2019

Polyester, resin, fiberglass, copper pipe, synthetic hair, electric motor

108 x 16 x 16 in (installed dimensions)

274.3 x 40.6 x 40.6 cm

48 x 16 x 16 in (piece dimensions)

121.92 x 40.6 x 40.6 cm

(AK#17106)



**Richard Hughes**

*Daydreaming Whilst Peeing*, 2019

Dyed stitched fabric, stuffing

108 x 84 in

274.3 x 213.4 cm

(AK#17107)



**Richard Hughes**

*Woosah*, 2019

Thermoplastic, polyester, resin, cast fiberglass

92 x 46 x 16 in

233.7 x 116.8 x 40.6 cm

(AK#17102)