

# Anton Kern Gallery

## It's Always Summer on the Inside



**Rita Ackermann**  
*The Ugly Painting*, 1996 - 1997  
Acrylic, ballpoint pen on canvas  
62 x 42 inches  
62 x 42 inches  
(157.5 x 106.7 cm)  
(AK#9052)



**Miriam Cahn**  
*Unklar*, 1996  
Oil on canvas  
22 7/8 x 37 3/8 inches  
22 7/8 x 37 3/8 inches  
(58.1 x 94.9 cm)  
(AK#9051)



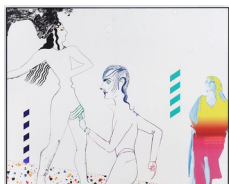
**David Dupuis**  
*Idumea*, 2010  
Color pencil and graphite on paper  
66 x 100 1/4 inches  
66 x 100 1/4 inches  
(167.6 x 254.6 cm)  
(AK#9056)



**Mark Flood**  
*ENJOY BLOOD*, 2011  
Spray paint on enameled metal sign  
36 x 36 inches  
36 x 36 inches  
(91.4 x 91.4 cm)  
(AK#9018)



**Mary Heilmann**  
*Mojave Mirage*, 2012  
Oil on canvas  
30 x 50 inches  
30 x 50 inches  
(76.2 x 127 cm)  
(AK#9042)



**Lothar Hempel**  
*Pub Brawl*, 2011  
Acrylic, oil, color pencil and pigment ink on aluminum  
48 x 59 3/4 inches (framed)  
(121.9 x 151.8 cm)  
(AK#8613)

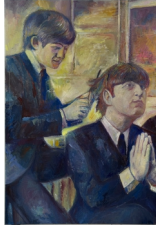
# Anton Kern Gallery



**Sean Landers**

*Around the World Alone (the Gloucesterman)*, 2011

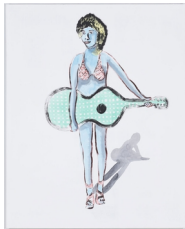
Oil on linen  
80 x 54 inches  
80 x 54 inches  
(203.2 x 137.2 cm)  
(AK#9057)



**Keith Mayerson**

*George Cutting John's Hair*, 2008

Oil on linen  
58 x 40 inches  
(147.3 x 101.6 cm)  
(AKP#5841)



**Dan McCarthy**

*Gingham Guitar*, 2012

Acrylic on canvas  
55 1/8 x 44 1/8 inches  
55 1/8 x 44 1/8 inches  
(140 x 112.1 cm)  
(AK#8906)



**Marlene McCarty**

*Lucy and Janice. 1977 - 1988. The Gambia.*, 2006

Graphite, ballpoint pen and plaka on paper  
69 1/2 x 79 1/2 inches  
69 1/2 x 79 1/2 inches  
(176.5 x 201.9 cm)  
(AK#9159)



**Matthew Monahan**

*Body Electric (Shin Bend)*, 2010

Oil on cardboard  
43 3/4 x 35 5/8 x 2 1/8 inches  
43 3/4 x 35 5/8 x 2 1/8 inches (framed)  
(111.1 x 90.5 x 5.4 cm)  
(AK#7985)



**Robert Moskowitz**

*Hardball*, 1992

Oil on canvas  
100 x 50 inches  
100 x 50 inches  
(254 x 127 cm)  
(AK#9054)

# Anton Kern Gallery



**Joyce Pensato**  
*Silver Batman*, 2012  
Enamel and metallic paint on linen  
80 x 80 inches  
80 x 80 inches  
(203.2 x 203.2 cm)  
(AK#9021)



**Jack Pierson**  
*MELANCHOLIA PASSING INTO MADNESS (9)*, 2006  
Acrylic on linen  
77 x 60 inches  
77 x 60 inches  
(195.6 x 152.4 cm)  
(AK#9058)



**Andreas Schulze**  
*Untitled (Mac Duff)*, 2002  
Acrylic on untreated cotton  
67 x 86 3/4 inches  
67 x 86 3/4 inches  
(170.2 x 220.3 cm)  
(AK#9059)



**Amy Sillman**  
*HAND*, 2012  
Oil on canvas  
49 x 51 inches  
49 x 51 inches  
(124.5 x 129.5 cm)  
(AK#9158)



**Kiki Smith**  
*Milky Way*, 2011  
Murrini with push pin, glass and plastic glitter, gold leaf and ink on Nepalese paper mounted on canvas  
72 x 76 inches  
72 x 76 inches  
(182.9 x 193 cm)  
(AK#9020)



**Phillip Taaffe**  
*Fragments*, 2011  
Mixed media on canvas  
76 1/2 x 61 inches  
76 1/2 x 61 inches  
(194.3 x 154.9 cm)  
(AK#9055)

# Anton Kern Gallery



**Dan Walsh**

*From Here*, 2008  
Signed and dated  
Acrylic on canvas  
74 x 115 inches  
74 x 115 inches  
(188 x 292.1 cm)  
(AK#9022)



**Robin Winters**

*Moment of Truth*, 1980  
Permatex and graphite on awning canvas  
54 x 44 inches  
54 x 44 inches  
(137.2 x 111.8 cm)  
(AK#9060)

# Anton Kern Gallery

Rita Ackermann  
*The Ugly Painting, 1996 - 1997*



Acrylic, ballpoint pen on canvas  
62 x 42 inches  
62 x 42 inches  
(157.5 x 106.7 cm)  
(AK#9052)

#### Exhibitions

New York, Anton Kern Gallery, *It's Always Summer On The Inside*, organized by Dan McCarthy, July 10 - August 24, 2012.

Miriam Cahn  
*Unklar*, 1996



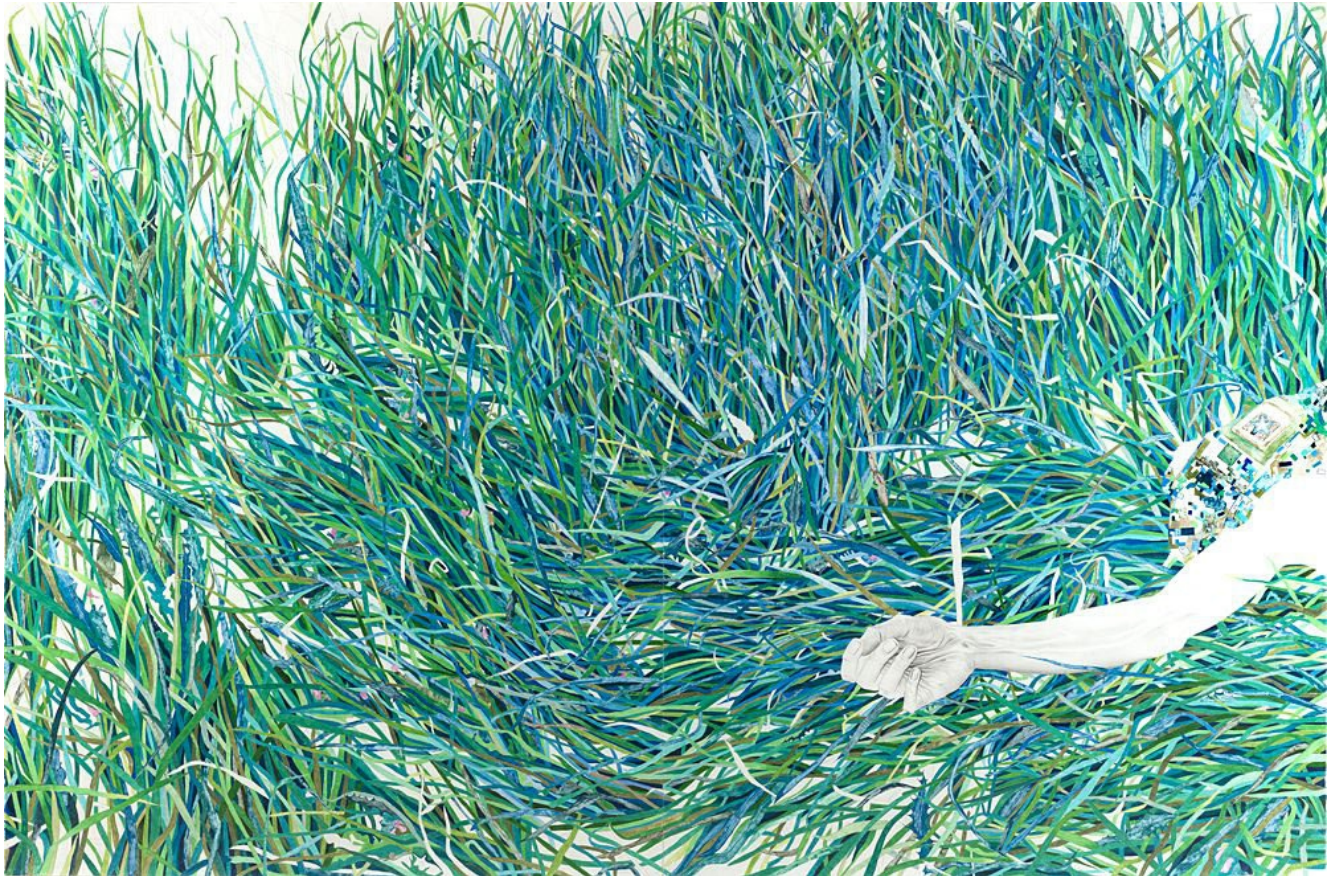
Oil on canvas  
22 7/8 x 37 3/8 inches  
22 7/8 x 37 3/8 inches  
(58.1 x 94.9 cm)  
(AK#9051)

**Exhibitions**

New York, Anton Kern Gallery, *It's Always Summer On The Inside*, organized by Dan McCarthy, July 10 - August 24, 2012.

# Anton Kern Gallery

David Dupuis  
*Idumea*, 2010



Color pencil and graphite on paper  
66 x 100 1/4 inches  
66 x 100 1/4 inches  
(167.6 x 254.6 cm)  
(AK#9056)

## Exhibitions

New York, Anton Kern Gallery, *It's Always Summer On The Inside*, organized by Dan McCarthy, July 10 - August 24, 2012.

Anton Kern Gallery

Mark Flood  
*ENJOY BLOOD*, 2011



Spray paint on enameled metal sign  
36 x 36 inches  
36 x 36 inches  
(91.4 x 91.4 cm)  
(AK#9018)

**Exhibitions**

New York, Anton Kern Gallery, *It's Always Summer On The Inside*, organized by Dan McCarthy, July 10 - August 24, 2012.



Mary Heilmann  
*Mojave Mirage*, 2012



Oil on canvas  
30 x 50 inches  
30 x 50 inches  
(76.2 x 127 cm)  
(AK#9042)

**Exhibitions**

New York, Anton Kern Gallery, *It's Always Summer On The Inside*, organized by Dan McCarthy, July 10 - August 24, 2012.

Lothar Hempel  
*Pub Brawl*, 2011



Acrylic, oil, color pencil and pigment ink on aluminum  
48 x 59 3/4 inches (framed)  
(121.9 x 151.8 cm)  
(AK#8613)

**Exhibitions**

New York, Anton Kern Gallery, Suedehead, September 17 - October 22, 2011.  
New York, Anton Kern Gallery, It's Always Summer On The Inside, organized by Dan McCarthy, July 10 - August 24, 2012.

# Anton Kern Gallery

Sean Landers  
*Around the World Alone (the Gloucesterman)*, 2011



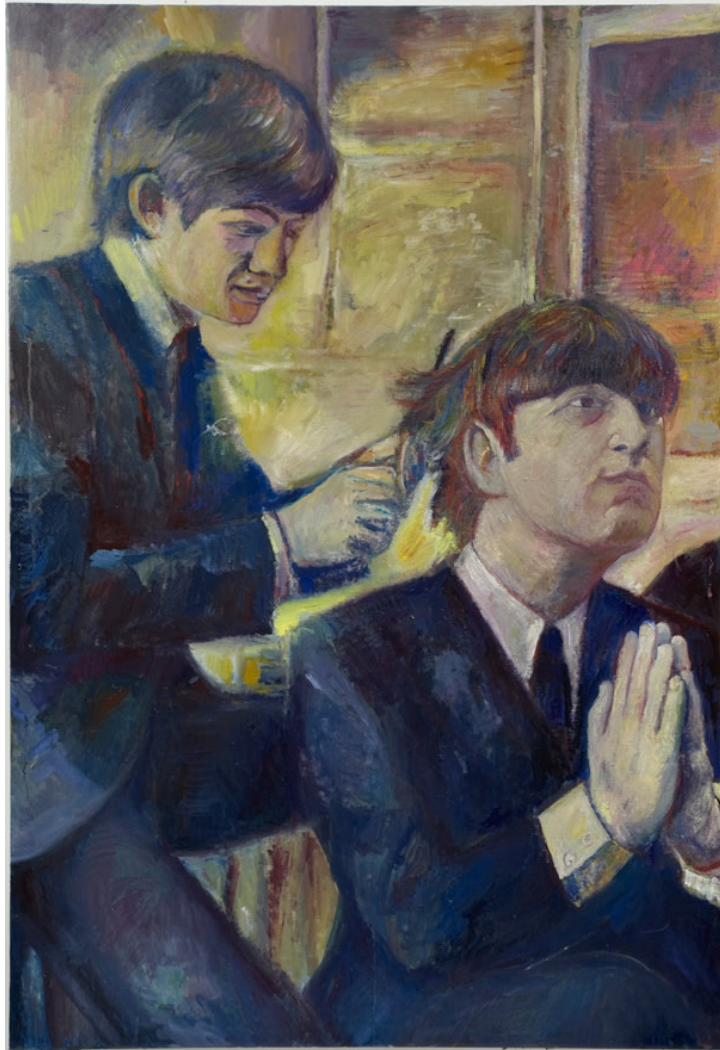
Oil on linen  
80 x 54 inches  
80 x 54 inches  
(203.2 x 137.2 cm)  
(AK#9057)

#### Exhibitions

New York, Anton Kern Gallery, *It's Always Summer On The Inside*, organized by Dan McCarthy, July 10 - August 24, 2012.

# Anton Kern Gallery

Keith Mayerson  
*George Cutting John's Hair, 2008*



Oil on linen  
58 x 40 inches  
(147.3 x 101.6 cm)  
(AKP#5841)

#### **Exhibitions**

New York, Anton Kern Gallery, *It's Always Summer On The Inside*, organized by Dan McCarthy, July 10 - August 24, 2012.

Dan McCarthy  
*Gingham Guitar, 2012*



Acrylic on canvas  
55 1/8 x 44 1/8 inches  
55 1/8 x 44 1/8 inches  
(140 x 112.1 cm)  
(AK#8906)

**Exhibitions**

New York, Anton Kern Gallery, *It's Always Summer On The Inside*, organized by Dan McCarthy, July 10 - August 24, 2012.

Marlene McCarty  
*Lucy and Janice. 1977 - 1988. The Gambia., 2006*



Graphite, ballpoint pen and plaka on paper  
69 1/2 x 79 1/2 inches  
69 1/2 x 79 1/2 inches  
(176.5 x 201.9 cm)  
(AK#9159)

**Exhibitions**

New York, Anton Kern Gallery, *It's Always Summer On The Inside*, organized by Dan McCarthy, July 10 - August 24, 2012.

# Anton Kern Gallery

Matthew Monahan  
*Body Electric (Shin Bend)*, 2010



Oil on cardboard  
43 3/4 x 35 5/8 x 2 1/8 inches  
43 3/4 x 35 5/8 x 2 1/8 inches (framed)  
(111.1 x 90.5 x 5.4 cm)  
(AK#7985)

#### Exhibitions

Massimo De Carlo Gallery  
September 17 - November 20, 2010

Via Giovanni Ventura, 5  
20134 Milan.

New York, Anton Kern Gallery, *It's Always Summer On The Inside*, organized by Dan McCarthy, July 10 - August 24, 2012.

Anton Kern Gallery

Robert Moskowitz  
*Hardball, 1992*



Oil on canvas  
100 x 50 inches  
100 x 50 inches  
(254 x 127 cm)  
(AK#9054)

**Exhibitions**

New York, Anton Kern Gallery, *It's Always Summer On The Inside*, organized by Dan McCarthy, July 10 - August 24, 2012.



Joyce Pensato  
*Silver Batman, 2012*



Enamel and metallic paint on linen  
80 x 80 inches  
80 x 80 inches  
(203.2 x 203.2 cm)  
(AK#9021)

**Exhibitions**

New York, Anton Kern Gallery, *It's Always Summer On The Inside*, organized by Dan McCarthy, July 10 - August 24, 2012.

Jack Pierson  
*MELANCHOLIA PASSING INTO MADNESS (9)*, 2006



Acrylic on linen  
77 x 60 inches  
77 x 60 inches  
(195.6 x 152.4 cm)  
(AK#9058)

**Exhibitions**

New York, Anton Kern Gallery, *It's Always Summer On The Inside*, organized by Dan McCarthy, July 10 - August 24, 2012.

Andreas Schulze  
*Untitled (Mac Duff)*, 2002



Acrylic on untreated cotton  
67 x 86 3/4 inches  
67 x 86 3/4 inches  
(170.2 x 220.3 cm)  
(AK#9059)

**Exhibitions**

London, UK, Cabinet Gallery, Andreas Schulze, 2002\*

New York, Gasser & Grunert, Every heartbeat is past and gone, 2004.

Brussels, Belgium, Art Brussels, Sorry we are closed - the Big Clown Show, 2011.

New York, Anton Kern Gallery, It's Always Summer On The Inside, organized by Dan McCarthy, July 10 - August 24, 2012.

# Anton Kern Gallery

Amy Sillman  
*HAND*, 2012



Oil on canvas  
49 x 51 inches  
49 x 51 inches  
(124.5 x 129.5 cm)  
(AK#9158)

## Exhibitions

New York, Anton Kern Gallery, *It's Always Summer On The Inside*, organized by Dan McCarthy, July 10 - August 24, 2012.

Kiki Smith  
*Milky Way, 2011*



Murrini with push pin, glass and plastic glitter, gold leaf and ink on Nepalese paper mounted on canvas  
72 x 76 inches  
72 x 76 inches  
(182.9 x 193 cm)  
(AK#9020)

**Exhibitions**

New York, Anton Kern Gallery, *It's Always Summer On The Inside*, organized by Dan McCarthy, July 10 - August 24, 2012.

Phillip Taaffe  
*Fragments, 2011*



Mixed media on canvas  
76 1/2 x 61 inches  
76 1/2 x 61 inches  
(194.3 x 154.9 cm)  
(AK#9055)

**Exhibitions**

New York, Anton Kern Gallery, *It's Always Summer On The Inside*, organized by Dan McCarthy, July 10 - August 24, 2012.

# Anton Kern Gallery

Dan Walsh  
*From Here, 2008*



Signed and dated  
Acrylic on canvas  
74 x 115 inches  
74 x 115 inches  
(188 x 292.1 cm)  
(AK#9022)

#### **Exhibitions**

New York, Anton Kern Gallery, *It's Always Summer On The Inside*, organized by Dan McCarthy, July 10 - August 24, 2012.

Robin Winters  
*Moment of Truth, 1980*



Permatex and graphite on awning canvas  
54 x 44 inches  
54 x 44 inches  
(137.2 x 111.8 cm)  
(AK#9060)

**Exhibitions**

New York, Anton Kern Gallery, *It's Always Summer On The Inside*, organized by Dan McCarthy, July 10 - August 24, 2012.