

Anton Kern Gallery

Alessandro Pessoli



Alessandro Pessoli
Homeless Under Sculpture, 2012
Maiolica ceramic and cast bronze base
12 1/2 x 18 x 6 1/4 inches
12 1/2 x 18 x 6 1/4 inches
(31.8 x 45.7 x 15.9 cm)
(AK#9219)



Alessandro Pessoli
Little Elephant, Twins & Cane Soldino, 2012
Maiolica ceramics and steel base
19 x 28 x 48 3/8 inches
19 x 28 x 48 3/8 inches
(48.3 x 71.1 x 122.9 cm)
(AK#9220)



Alessandro Pessoli
Nest Head, 2012
Maiolica ceramic and cast bronze base
63 x 23 x 23 inches
63 x 23 x 23 inches
(160 x 58.4 x 58.4 cm)
(AK#9221)



Alessandro Pessoli
Paul Verlaine & Arthur Rimbaud, 2012
Painted ceramic, wire, mixed fabrics, acrylic and steel
variable dimensions
(AK#9222)



Alessandro Pessoli
Sancho Panza & Don Chiscotte, 2012
Maiolica ceramics, wire and steel base
84 x 52 1/2 x 40 1/4 inches
84 x 52 1/2 x 40 1/4 inches
(213.4 x 133.4 x 102.2 cm)
(AK#9223)



Alessandro Pessoli
Still Life, 2012
Maiolica ceramic, wire and cast bronze
Image Dimensions:
74 x 52 1/2 x 21 1/4 inches
38 x 52 1/2 x 21 1/4 inches (96.52 x 133.35 x 53.97 cm)
Framed Dimensions:
22 1/4 x 9 1/2 x 8 1/2 inches (56.52 x 24.13 x 21.59 cm)
Paper Dimensions:
50 x 24 x 20 3/8 inches (127 x 60.96 x 51.75 cm)
(AK#9224)

Anton Kern Gallery



Alessandro Pessoli

Teti Roof, 2012

Maiolica ceramic, copper, cast bronze, steel and acrylic on cotton

109 x 122 1/2 x 14 inches

109 x 122 1/2 x 14 inches

(276.9 x 311.2 x 35.6 cm)

(AK#9225)



Alessandro Pessoli

The Bathers, 2012

Maiolica ceramic and cast bronze base

48 x 39 1/2 x 14 1/2 inches

48 x 39 1/2 x 14 1/2 inches

(121.9 x 100.3 x 36.8 cm)

(AK#9226)



Alessandro Pessoli

Follow Petunia, 2012

Maiolica ceramics and steel base

27 1/8 x 90 1/2 x 28 1/4 inches

27 1/8 x 90 1/2 x 28 1/4 inches

(68.9 x 229.9 x 71.8 cm)

(AK#9227)



Alessandro Pessoli

Unfinished Utopia, 2012

Maiolica ceramic and steel base

50 x 12 x 12 inches

50 x 12 x 12 inches

(127 x 30.5 x 30.5 cm)

(AK#9228)



Alessandro Pessoli

900, 2012

Maiolica ceramic and steel base

Ceramic Dimensions:

16 5/8 x 12 3/4 x 21 1/2 inches

(42.2 x 32.4 x 54.6 cm)

Base Dimensions:

23 5/8 x 11 7/8 x 30 inches

(60 x 30.2 x 76.2 cm)

Overall Dimensions:

23 5/8 x 12 3/4 x 51 1/2 inches

(60 x 32.4 x 130.8 cm)

(AK#9229)



Alessandro Pessoli

Little Atomo Roof, 2012

Maiolica ceramic, cast bronze, steel and acrylic on cotton

81 x 38 1/2 x 20 inches

81 x 38 1/2 x 20 inches

(205.7 x 97.8 x 50.8 cm)

(AK#9230)

Anton Kern Gallery



Alessandro Pessoli
Blind Man, 2012
Maiolica ceramic and steel base
64 x 12 x 11 1/4 inches
64 x 12 x 11 1/4 inches
(162.6 x 30.5 x 28.6 cm)
(AK#9231)



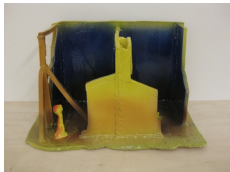
Alessandro Pessoli
Tavola Morandi, 2012
Maiolica ceramic and cast bronze base
56 x 45 x 15 inches
56 x 45 x 15 inches
(142.2 x 114.3 x 38.1 cm)
(AK#9232)



Alessandro Pessoli
Carlo Emilio Gadda & Dino Campana, 2012
Maiolica ceramics and steel base
78 x 46 1/2 x 21 1/2 inches
78 x 46 1/2 x 21 1/2 inches
(198.1 x 118.1 x 54.6 cm)
(AK#9233)



Alessandro Pessoli
Chimney Head, 2012
Maiolica ceramic and cast bronze base
70 1/2 x 26 x 28 inches
70 1/2 x 26 x 28 inches
(179.1 x 66 x 71.1 cm)
(AK#9234)



Alessandro Pessoli
Blue Room, 2012
Maiolica ceramic and steel base
47 x 19 1/2 x 12 1/4 inches
47 x 19 1/2 x 12 1/4 inches
(119.4 x 49.5 x 31.1 cm)
(AK#9235)



Alessandro Pessoli
Pasolini Room, 2012
Maiolica ceramic and steel base
55 x 18 x 11 1/2 inches
55 x 18 x 11 1/2 inches
(139.7 x 45.7 x 29.2 cm)
(AK#9236)

Anton Kern Gallery



Alessandro Pessoli

Red Room, 2012

Maiolica ceramic and steel base

53 1/2 x 20 x 11 inches

53 1/2 x 20 x 11 inches

(135.9 x 50.8 x 27.9 cm)

(AK#9237)



Alessandro Pessoli

Lizard, 2012

Maiolica ceramic and aluminum base

71 x 19 x 19 inches

71 x 19 x 19 inches

(180.3 x 48.3 x 48.3 cm)

(AK#9238)



Alessandro Pessoli

Biker Goose, 2012

Acrylic on cotton, spray paint and steel frame

84 x 106 x 18 1/2 inches

84 x 106 x 18 1/2 inches

(213.4 x 269.2 x 47 cm)

(AK#9239)



Alessandro Pessoli

One Million Miles from Home, 2012

Acrylic on cotton, spray paint and steel frame

84 x 135 x 18 1/2 inches

84 x 135 x 18 1/2 inches

(213.4 x 342.9 x 47 cm)

(AK#9240)



Alessandro Pessoli

Big Io, 2012

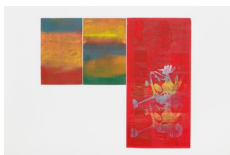
Acrylic on cotton, spray paint and steel frame

83 x 132 x 18 1/2 inches

83 x 132 x 18 1/2 inches

(210.8 x 335.3 x 47 cm)

(AK#9241)



Alessandro Pessoli

Chicken Chopper, 2012

Oil and acrylic on paper

21 x 24 inches

21 x 24 inches

(53.3 x 61 cm)

(AK#9245)



Alessandro Pessoli

Animal Hollywood Sunset, 2012

Oil and acrylic on paper

21 1/4 x 84 inches

21 1/4 x 84 inches

(54 x 213.4 cm)

Anton Kern Gallery

(AK#9246)



Alessandro Pessoli

Dragster, 2012

Oil and acrylic on paper

21 1/4 x 22 3/4 inches

21 1/4 x 22 3/4 inches

(54 x 57.8 cm)

(AK#9247)



Alessandro Pessoli

Dragster Burning, 2012

Oil and acrylic on paper

22 1/4 x 21 1/2 inches

22 1/4 x 21 1/2 inches

(56.5 x 54.6 cm)

(AK#9248)

Alessandro Pessoli
Homeless Under Sculpture, 2012



Maiolica ceramic and cast bronze base
12 1/2 x 18 x 6 1/4 inches
12 1/2 x 18 x 6 1/4 inches
(31.8 x 45.7 x 15.9 cm)
(AK#9219)

Description

Sculpture: 12 1/2 x 18 x 6 1/4 inches
Install: 60 x 18 x 6 1/4 inches
54 inches to top of bronze
Production base: \$500

Exhibitions

New York, Anton Kern Gallery, Alessandro Pessoli: Fired People, September 14 - October 20, 2012.

Anton Kern Gallery

Alessandro Pessoli
Little Elephant, Twins & Cane Soldino, 2012



Maiolica ceramics and steel base
19 x 28 x 48 3/8 inches
19 x 28 x 48 3/8 inches
(48.3 x 71.1 x 122.9 cm)
(AK#9220)

Exhibitions

New York, Anton Kern Gallery, Alessandro Pessoli: Fired People, September 14 - October 20, 2012.

Alessandro Pessoli
Nest Head, 2012



Maiolica ceramic and cast bronze base
63 x 23 x 23 inches
63 x 23 x 23 inches
(160 x 58.4 x 58.4 cm)
(AK#9221)

Exhibitions

New York, Phillips, THE GREAT WONDERFUL: 100 YEARS OF ITALIAN ART CURATED BY FRANCESCO BONAMI, May 2015
New York, Anton Kern Gallery, Alessandro Pessoli: Fired People, September 14 - October 20, 2012.

Anton Kern Gallery

Alessandro Pessoli
Paul Verlaine & Arthur Rimbaud, 2012



Painted ceramic, wire, mixed fabrics, acrylic and steel
variable dimensions
(AK#9222)

Exhibitions

New York, Anton Kern Gallery, Alessandro Pessoli: *Fired People*, September 14 - October 20, 2012.

Alessandro Pessoli
Sancho Panza & Don Chiscotte, 2012



Maiolica ceramics, wire and steel base
84 x 52 1/2 x 40 1/4 inches
84 x 52 1/2 x 40 1/4 inches
(213.4 x 133.4 x 102.2 cm)
(AK#9223)

Exhibitions

New York, Anton Kern Gallery, Alessandro Pessoli: Fired People, September 14 - October 20, 2012.

Alessandro Pessoli
Still Life, 2012



Maiolica ceramic, wire and cast bronze

Image Dimensions:

74 x 52 1/2 x 21 1/4 inches

38 x 52 1/2 x 21 1/4 inches (96.52 x 133.35 x 53.97 cm)

Framed Dimensions:

22 1/4 x 9 1/2 x 8 1/2 inches (56.52 x 24.13 x 21.59 cm)

Paper Dimensions:

50 x 24 x 20 3/8 inches (127 x 60.96 x 51.75 cm)

(AK#9224)

Exhibitions

New York, Anton Kern Gallery, Alessandro Pessoli: Fired People, September 14 - October 20, 2012.

New York, Anton Kern Gallery, Alessandro Pessoli: Against Me, October 12 – November 11, 2017.

Alessandro Pessoli
Teti Roof, 2012



Maiolica ceramic, copper, cast bronze, steel and acrylic on cotton
109 x 122 1/2 x 14 inches
109 x 122 1/2 x 14 inches
(276.9 x 311.2 x 35.6 cm)
(AK#9225)

Description

UOVO ID#675486, 675487, 675488, 675489, 795766

Painting: 74 1/2 x 113 1/4 inches
Bronze (left): 61 x 17 1/2 x 10 1/2 inches
Steel (right): 61 x 17 1/2 x 9 inches
Ceramic left: 4 x 22 1/2 x 24 inches
Ceramic middle: 4 x 21 x 7 inches
Ceramic: 3 x 16 x 30 inches
Production base: \$10,000

Exhibitions

New York, Anton Kern Gallery, Alessandro Pessoli: Fired People, September 14 - October 20, 2012.

Alessandro Pessoli
The Bathers, 2012



Maiolica ceramic and cast bronze base
48 x 39 1/2 x 14 1/2 inches
48 x 39 1/2 x 14 1/2 inches
(121.9 x 100.3 x 36.8 cm)
(AK#9226)

Exhibitions

New York, Anton Kern Gallery, Alessandro Pessoli: Fired People, September 14 - October 20, 2012.

Alessandro Pessoli
Follow Petunia, 2012



Maiolica ceramics and steel base
27 1/8 x 90 1/2 x 28 1/4 inches
27 1/8 x 90 1/2 x 28 1/4 inches
(68.9 x 229.9 x 71.8 cm)
(AK#9227)

Exhibitions

New York, Anton Kern Gallery, Alessandro Pessoli: Fired People, September 14 - October 20, 2012.

Alessandro Pessoli
Unfinished Utopia, 2012



Maiolica ceramic and steel base
50 x 12 x 12 inches
50 x 12 x 12 inches
(127 x 30.5 x 30.5 cm)
(AK#9228)

Exhibitions

New York, Anton Kern Gallery, Alessandro Pessoli: *Fired People*, September 14 - October 20, 2012.

Alessandro Pessoli
900, 2012



Maiolica ceramic and steel base

Ceramic Dimensions:

16 5/8 x 12 3/4 x 21 1/2 inches
(42.2 x 32.4 x 54.6 cm)

Base Dimensions:

23 5/8 x 11 7/8 x 30 inches
(60 x 30.2 x 76.2 cm)

Overall Dimensions:

23 5/8 x 12 3/4 x 51 1/2 inches
(60 x 32.4 x 130.8 cm)

(AK#9229)

Exhibitions

New York, Anton Kern Gallery, Alessandro Pessoli: Fired People, September 14 - October 20, 2012.

Anton Kern Gallery

New York, Anton Kern Gallery, Alessandro Pessoli: Against Me, October 12 – November 11, 2017.

Alessandro Pessoli
Little Atomo Roof, 2012



Maiolica ceramic, cast bronze, steel and acrylic on cotton
81 x 38 1/2 x 20 inches
81 x 38 1/2 x 20 inches
(205.7 x 97.8 x 50.8 cm)
(AK#9230)

Exhibitions

New York, Anton Kern Gallery, Alessandro Pessoli: *Fired People*, September 14 - October 20, 2012.

Alessandro Pessoli
Blind Man, 2012



Maiolica ceramic and steel base
64 x 12 x 11 1/4 inches
64 x 12 x 11 1/4 inches
(162.6 x 30.5 x 28.6 cm)
(AK#9231)

Exhibitions

New York, Anton Kern Gallery, Alessandro Pessoli: Fired People, September 14 - October 20, 2012.

Alessandro Pessoli
Tavola Morandi, 2012



Maiolica ceramic and cast bronze base
56 x 45 x 15 inches
56 x 45 x 15 inches
(142.2 x 114.3 x 38.1 cm)
(AK#9232)

Exhibitions

New York, Anton Kern Gallery, Alessandro Pessoli: Fired People, September 14 - October 20, 2012.

Alessandro Pessoli
Carlo Emilio Gadda & Dino Campana, 2012



Maiolica ceramics and steel base
78 x 46 1/2 x 21 1/2 inches
78 x 46 1/2 x 21 1/2 inches
(198.1 x 118.1 x 54.6 cm)
(AK#9233)

Exhibitions

New York, Anton Kern Gallery, Alessandro Pessoli: Fired People, September 14 - October 20, 2012.

Alessandro Pessoli
Chimney Head, 2012

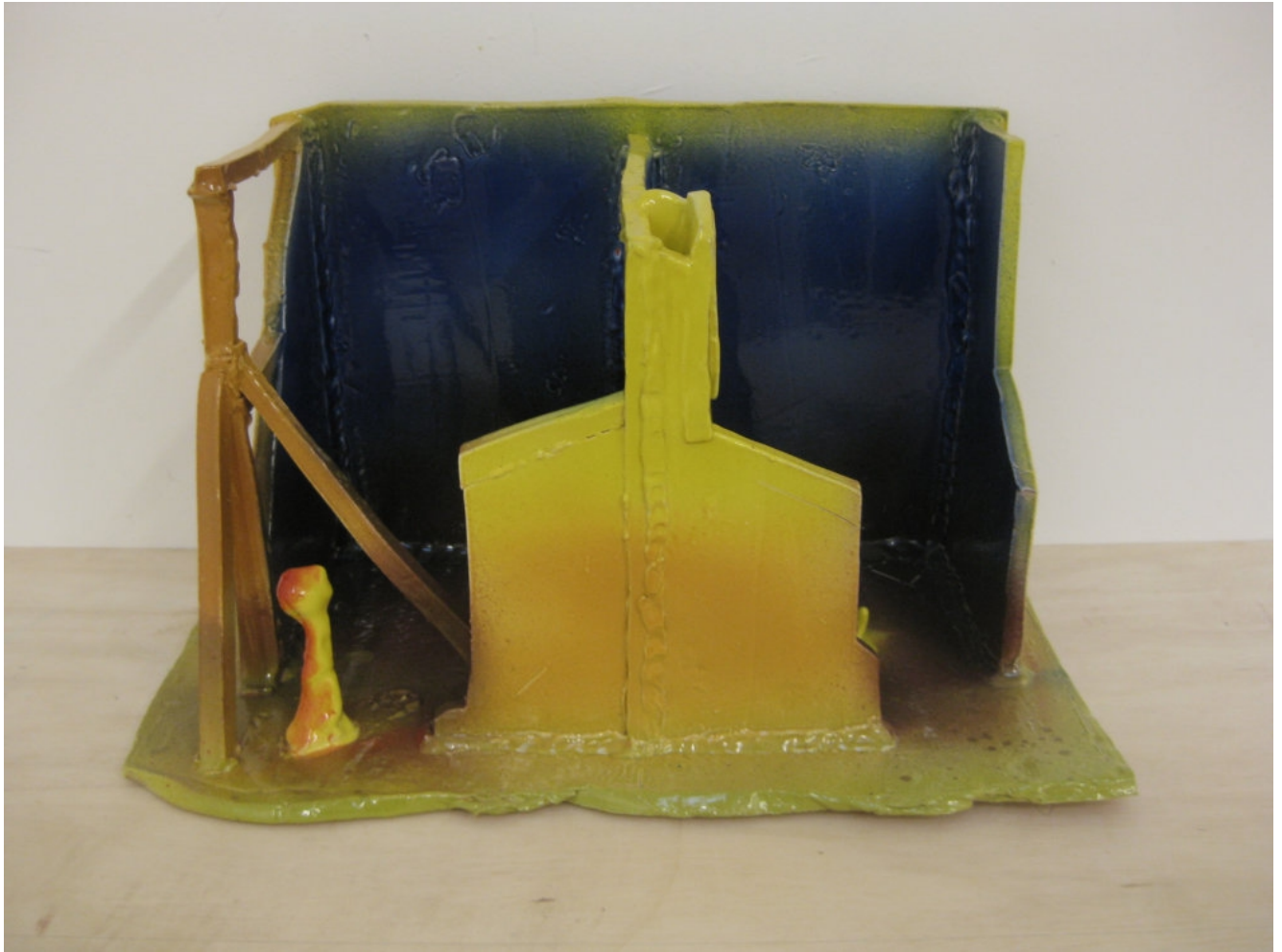


Maiolica ceramic and cast bronze base
70 1/2 x 26 x 28 inches
70 1/2 x 26 x 28 inches
(179.1 x 66 x 71.1 cm)
(AK#9234)

Exhibitions

New York, Anton Kern Gallery, Alessandro Pessoli: Fired People, September 14 - October 20, 2012.

Alessandro Pessoli
Blue Room, 2012



Maiolica ceramic and steel base
47 x 19 1/2 x 12 1/4 inches
47 x 19 1/2 x 12 1/4 inches
(119.4 x 49.5 x 31.1 cm)
(AK#9235)

Exhibitions

New York, Anton Kern Gallery, Alessandro Pessoli: Fired People, September 14 - October 20, 2012.

Alessandro Pessoli
Pasolini Room, 2012



Maiolica ceramic and steel base
55 x 18 x 11 1/2 inches
55 x 18 x 11 1/2 inches
(139.7 x 45.7 x 29.2 cm)
(AK#9236)

Exhibitions

New York, Anton Kern Gallery, Alessandro Pessoli: *Fired People*, September 14 - October 20, 2012.

Alessandro Pessoli
Red Room, 2012



Maiolica ceramic and steel base
53 1/2 x 20 x 11 inches
53 1/2 x 20 x 11 inches
(135.9 x 50.8 x 27.9 cm)
(AK#9237)

Exhibitions

New York, Anton Kern Gallery, Alessandro Pessoli: Fired People, September 14 - October 20, 2012.

Alessandro Pessoli
Lizard, 2012



Maiolica ceramic and aluminum base
71 x 19 x 19 inches
71 x 19 x 19 inches
(180.3 x 48.3 x 48.3 cm)
(AK#9238)

Exhibitions

New York, Anton Kern Gallery, Alessandro Pessoli: Fired People, September 14 - October 20, 2012.

Anton Kern Gallery

Alessandro Pessoli
Biker Goose, 2012



Acrylic on cotton, spray paint and steel frame
84 x 106 x 18 1/2 inches
84 x 106 x 18 1/2 inches
(213.4 x 269.2 x 47 cm)
(AK#9239)

Exhibitions

New York, Anton Kern Gallery, Alessandro Pessoli: Fired People, September 14 - October 20, 2012.

Anton Kern Gallery

Alessandro Pessoli *One Million Miles from Home, 2012*



Acrylic on cotton, spray paint and steel frame
84 x 135 x 18 1/2 inches
84 x 135 x 18 1/2 inches
(213.4 x 342.9 x 47 cm)
(AK#9240)

Exhibitions

New York, Anton Kern Gallery, Alessandro Pessoli: Fired People, September 14 - October 20, 2012.

Alessandro Pessoli
Big Io, 2012

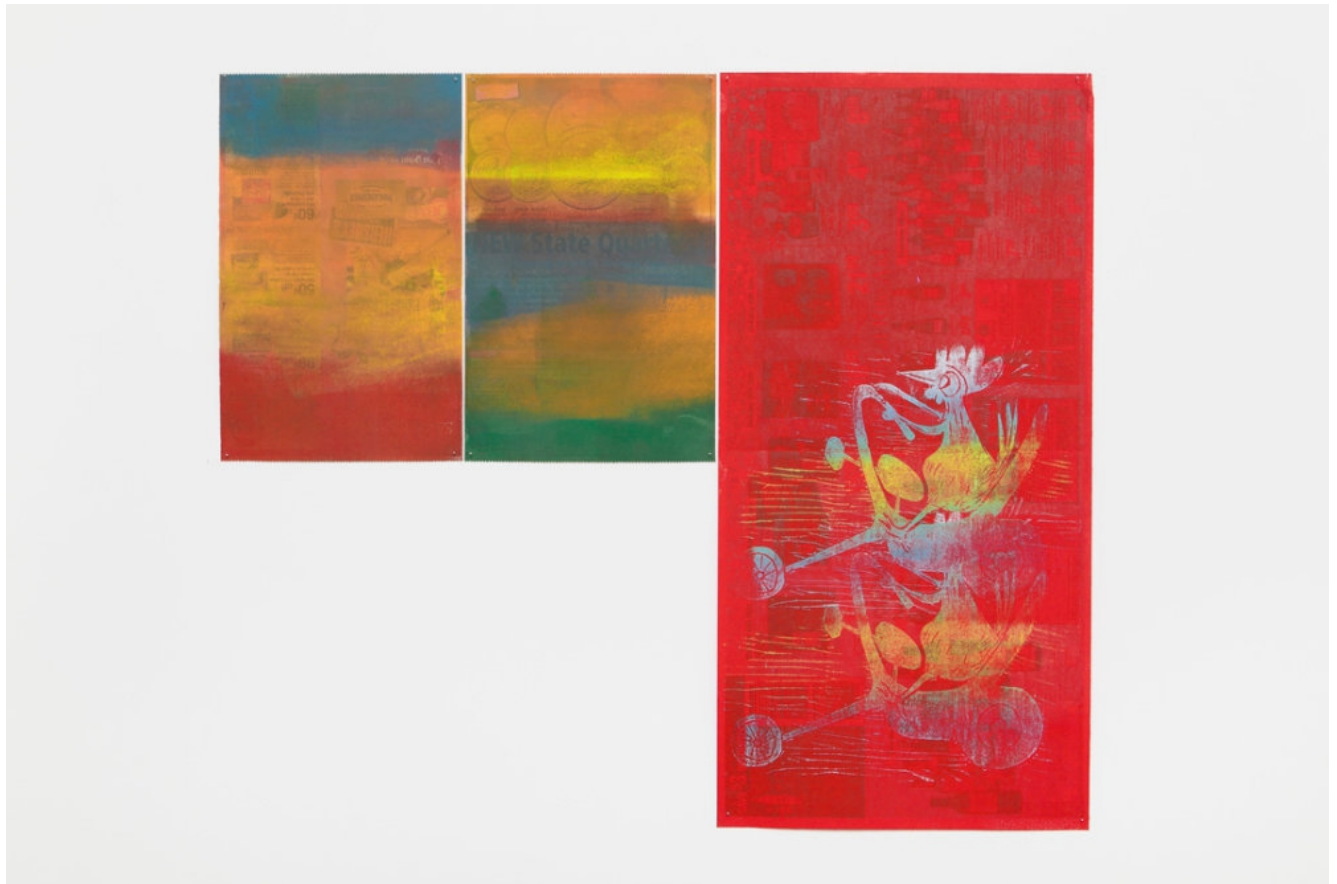


Acrylic on cotton, spray paint and steel frame
83 x 132 x 18 1/2 inches
83 x 132 x 18 1/2 inches
(210.8 x 335.3 x 47 cm)
(AK#9241)

Exhibitions

New York, Anton Kern Gallery, Alessandro Pessoli: Fired People, September 14 - October 20, 2012.

Alessandro Pessoli
Chicken Chopper, 2012



Oil and acrylic on paper
21 x 24 inches
21 x 24 inches
(53.3 x 61 cm)
(AK#9245)

Exhibitions

New York, Anton Kern Gallery, Alessandro Pessoli: Fired People, September 14 - October 20, 2012.

Anton Kern Gallery

Alessandro Pessoli
Animal Hollywood Sunset, 2012



Oil and acrylic on paper
21 1/4 x 84 inches
21 1/4 x 84 inches
(54 x 213.4 cm)
(AK#9246)

Exhibitions

New York, Anton Kern Gallery, Alessandro Pessoli: Fired People, September 14 - October 20, 2012.

Anton Kern Gallery

Alessandro Pessoli *Dragster*, 2012



Oil and acrylic on paper
21 1/4 x 22 3/4 inches
21 1/4 x 22 3/4 inches
(54 x 57.8 cm)
(AK#9247)

Exhibitions

New York, Anton Kern Gallery, Alessandro Pessoli: Fired People, September 14 - October 20, 2012.

Anton Kern Gallery

Alessandro Pessoli *Dragster Burning*, 2012



Oil and acrylic on paper
22 1/4 x 21 1/2 inches
22 1/4 x 21 1/2 inches
(56.5 x 54.6 cm)
(AK#9248)

Exhibitions

New York, Anton Kern Gallery, Alessandro Pessoli: Fired People, September 14 - October 20, 2012.