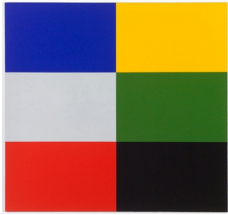


Anton Kern Gallery

Eberhard Havekost



Eberhard Havekost
Schöner Wohnen B12, 2012
Oil on canvas
59 1/16 x 63 inches
59 1/16 x 63 inches
(150 x 160 cm)
(AK#9189)



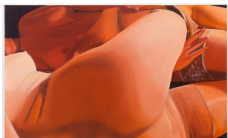
Eberhard Havekost
Ocean B12, 2012
Oil on canvas
55 1/8 x 39 3/8 inches
55 1/8 x 39 3/8 inches
(140 x 100 cm)
(AK#9190)



Eberhard Havekost
Form B12, 2012
Oil on canvas
27 9/16 x 35 7/16 inches
(70 x 90 cm)
27 9/16 x 35 7/16 inches
(70 x 90 cm)
(AK#9191)



Eberhard Havekost
Copy + Property B12, 2012
Oil on canvas
78 3/4 x 66 15/16 inches (diptych - each panel)
(200 x 170 cm)
(AK#9192)



Eberhard Havekost
Lifesize B12, 2012
Oil on canvas
78 3/4 x 66 15/16 inches
23 5/8 x 39 3/8 inches
(60 x 100 cm)
(AK#9193)



Eberhard Havekost
Inkjet Flatscreen B12, 2012
Oil on canvas
110 1/4 x 66 15/16 inches
110 1/4 x 66 15/16 inches
(280 x 170 cm)
(AK#9194)

Anton Kern Gallery



Eberhard Havekost

The End B12, 2012

Oil on canvas

47 1/4 x 27 9/16 inches

6 panel, 27 9/16 x 47 1/4 inches each

(70 x 120 cm each)

(AK#9195)



Eberhard Havekost

Island B12, 2012

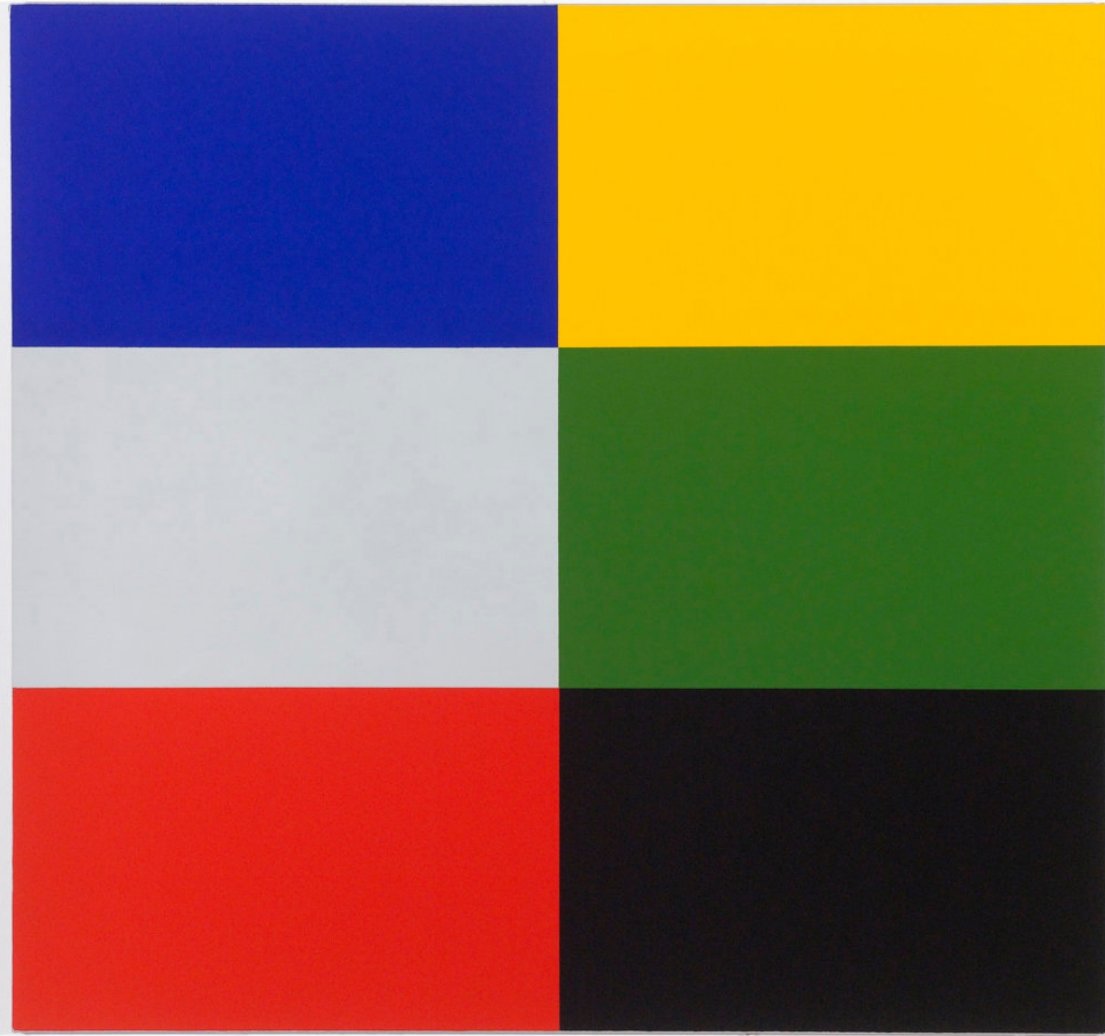
Oil on canvas

35 7/16 x 23 5/8 inches

(90 x 60 cm)

(AK#9196)

Eberhard Havekost
Schöner Wohnen B12, 2012



Oil on canvas
59 1/16 x 63 inches
59 1/16 x 63 inches
(150 x 160 cm)
(AK#9189)

Exhibitions

New York, Anton Kern Gallery, Eberhard Havekost: Copy + Ownership, October 25 - December 15, 2012

Duisburg, Museum Kueppersmuehle für Moderne Kunst, TITEL. EBERHARD HAVEKOST, July 12 - October 20, 2013

Berlin, KINDL, Inhalt (Content), October 23, 2016 - February 19, 2017

Anton Kern Gallery

Prague, Galerie Rudolfinum, Inhalt (Content), April 5 - July 2, 2017

Anton Kern Gallery

Eberhard Havekost
Ocean B12, 2012



Anton Kern Gallery

Oil on canvas
55 1/8 x 39 3/8 inches
55 1/8 x 39 3/8 inches
(140 x 100 cm)
(AK#9190)

Exhibitions

New York, Anton Kern Gallery, Eberhard Havekost: Copy + Ownership, October 25 - December 15, 2012.

Duisburg, Museum Kueppersmuehle für Moderne Kunst, TITEL. EBERHARD HAVEKOST, July 12 - October 20, 2013.

Eberhard Havekost
Form B12, 2012



Oil on canvas
27 9/16 x 35 7/16 inches
(70 x 90 cm)
27 9/16 x 35 7/16 inches
(70 x 90 cm)
(AK#9191)

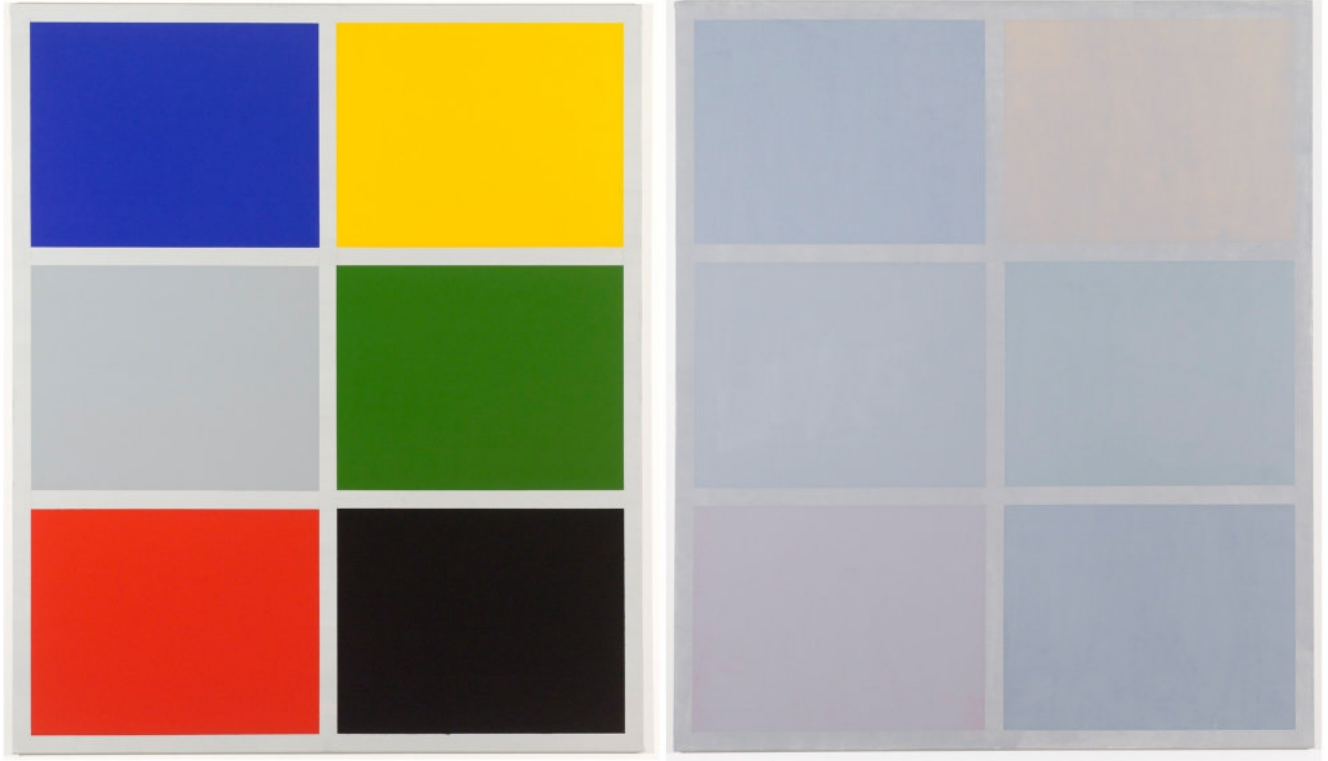
Exhibitions

New York, Anton Kern Gallery, Eberhard Havekost: Copy + Ownership, October 25 - December 15, 2012.

Duisburg, Museum Kueppersmuehle für Moderne Kunst, TITEL. EBERHARD HAVEKOST, July 12 - October 20, 2013.

Anton Kern Gallery

Eberhard Havekost
Copy + Property B12, 2012



Oil on canvas
78 3/4 x 66 15/16 inches (diptych - each panel)
(200 x 170 cm)
(AK#9192)

Exhibitions

New York, Anton Kern Gallery, Eberhard Havekost: Copy + Ownership, October 25 - December 15, 2012

Duisburg, Museum Kueppersmuehle für Moderne Kunst, TITEL. EBERHARD HAVEKOST, July 12 - October 20, 2013

Berlin, KINDL, Inhalt (Content), October 23, 2016 - February 19, 2017

Prague, Galerie Rudolfinum, Inhalt (Content), April 5 - July 2, 2017

Eberhard Havekost
Lifesize B12, 2012



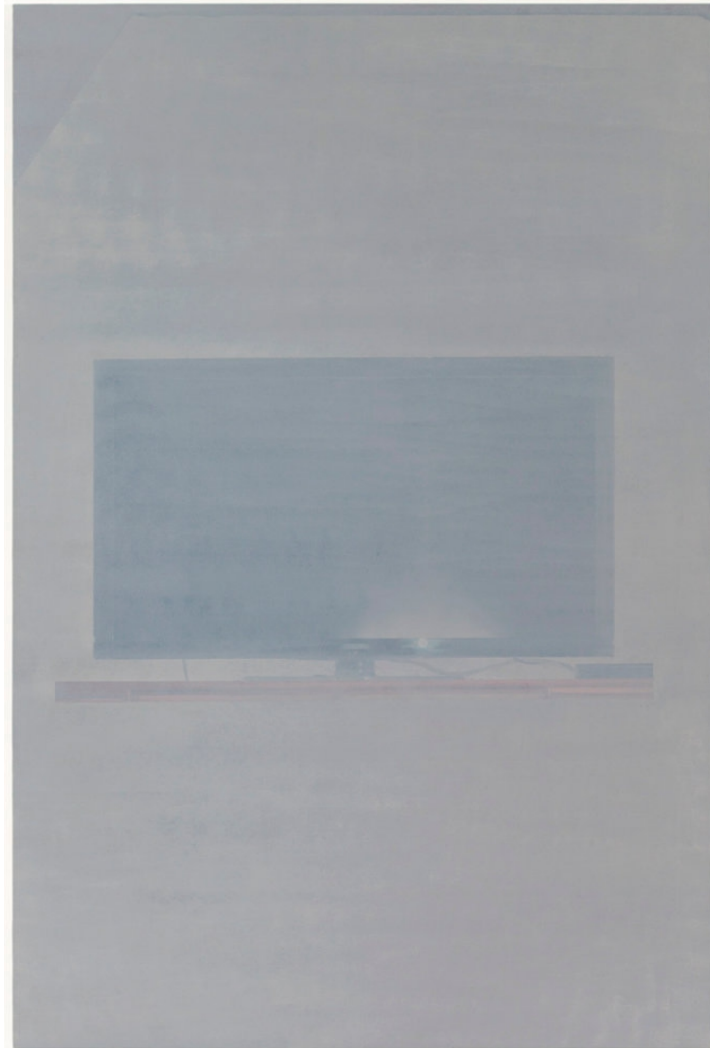
Oil on canvas
78 3/4 x 66 15/16 inches
23 5/8 x 39 3/8 inches
(60 x 100 cm)
(AK#9193)

Exhibitions

New York, Anton Kern Gallery, Eberhard Havekost: Copy + Ownership, October 25 - December 15, 2012.

Duisburg, Museum Kueppersmuehle für Moderne Kunst, TITEL. EBERHARD HAVEKOST, July 12 - October 20, 2013.

Eberhard Havekost
Inkjet Flatscreen B12, 2012



Oil on canvas
110 1/4 x 66 15/16 inches
110 1/4 x 66 15/16 inches
(280 x 170 cm)
(AK#9194)

Exhibitions

New York, Anton Kern Gallery, Eberhard Havekost: Copy + Ownership, October 25 - December 15, 2012.

Duisburg, Museum Kueppersmuehle für Moderne Kunst, TITEL. EBERHARD HAVEKOST, July 12 - October 20, 2013.

Eberhard Havekost
The End B12, 2012



Oil on canvas
47 1/4 x 27 9/16 inches
6 panel, 27 9/16 x 47 1/4 inches each
(70 x 120 cm each)
(AK#9195)

Literature

Landscapes after Ruskin: Redefining the Sublime. Reading: The Hall Foundation, p. 7.

Exhibitions

New York, Anton Kern Gallery, Eberhard Havekost: Copy + Ownership, October 25 - December 15, 2012.

Duisburg, Museum Kueppersmuehle für Moderne Kunst, TITEL. EBERHARD HAVEKOST, July 12 - October 20, 2013.

Reading, VT, The Hall Art Foundation, Landscapes after Ruskin: Redefining the Sublime, curated by Joel Sternfeld, May 14 - November 27, 2016

Anton Kern Gallery

Eberhard Havekost
Island B12, 2012



Oil on canvas
35 7/16 x 23 5/8 inches
(90 x 60 cm)
(AK#9196)

Exhibitions

New York, Anton Kern Gallery, Eberhard Havekost: Copy + Ownership, October 25 - December 15, 2012.

Duisburg, Museum Kueppersmuehle für Moderne Kunst, TITEL. EBERHARD HAVEKOST, July 12 - October 20, 2013.