

Anton Kern Gallery

Dan McCarthy



Dan McCarthy

Untitled Facepot #17, 2013

Labeled #17 and signed and dated on bottom

Low fire clay and glaze, enamel paint and silver luster

20 1/4 x 12 1/8 inches

(51.4 x 30.8 cm)

(AK#9906)



Dan McCarthy

Spring Break, 2013

Acrylic on marbled gesso on shaped canvas stretcher

73 x 61 inches

(185.4 x 154.9 cm)

(AK#10000)



Dan McCarthy

Red Crayola, 2013

Acrylic on marbled gesso on shaped canvas stretcher

73 x 62 inches

(185.4 x 157.5 cm)

(AK#10003)



Dan McCarthy

Good Weed, 2013

Acrylic on marbled gesso on shaped canvas stretcher

72 x 60 1/2 inches

(182.9 x 153.7 cm)

(AK#10004)



Dan McCarthy

Peach Tree, 2013

Acrylic on marbled gesso on shaped canvas stretcher

73 x 62 inches

(185.4 x 157.5 cm)

(AK#10005)



Dan McCarthy

Angel Dust, 2013

Acrylic on marbled gesso on shaped canvas stretcher

71 x 60 inches

(180.3 x 152.4 cm)

(AK#10006)

Anton Kern Gallery



Dan McCarthy

Black Metal, 2013

Acrylic on marbled gesso on shaped canvas stretcher

72 x 61 inches

(182.9 x 154.9 cm)

(AK#10007)



Dan McCarthy

Partridge Family, 2013

Acrylic on marbled gesso on shaped canvas stretcher

70 x 62 inches

(177.8 x 157.5 cm)

(AK#10010)



Dan McCarthy

Easter Egg, 2013

Acrylic on marbled gesso on shaped canvas stretcher

71 x 59 inches

(180.3 x 149.9 cm)

(AK#10011)



Dan McCarthy

Night Tide, 2013

Acrylic on marbled gesso on shaped canvas stretcher

73 x 61 inches

(185.4 x 154.9 cm)

(AK#10015)



Dan McCarthy

Night Watch, 2013

Acrylic on marbled gesso on shaped canvas stretcher

72 x 62 inches

(182.9 x 157.5 cm)

(AK#10016)



Dan McCarthy

Untitled work on paper #2, 2013

signed and dated on the reverse

Acrylic paint on paper

26 x 20 inches

(66 x 50.8 cm)

27 1/2 x 21 1/2 inches (framed)

(AK#10021)

Anton Kern Gallery



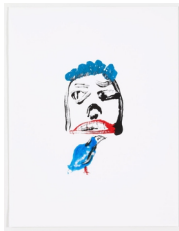
Dan McCarthy

Untitled work on paper #4, 2013
signed and dated on the reverse
Acrylic paint on paper
26 x 20 inches
(66 x 50.8 cm)
27 1/2 x 21 1/2 inches (framed)
(AK#10023)



Dan McCarthy

Untitled work on paper #7, 2013
signed and dated on the reverse
Acrylic paint on paper
26 x 20 inches
(66 x 50.8 cm)
27 1/2 x 21 1/2 inches (framed)
(AK#10026)



Dan McCarthy

Untitled work on paper #1, 2013
signed and dated on the reverse
Acrylic paint on paper
26 x 20 inches
(66 x 50.8 cm)
27 1/2 x 21 1/2 inches (framed)
(AK#10033)



Dan McCarthy

Untitled work on paper #18, 2013
signed and dated on the reverse
Acrylic paint on paper
26 x 20 inches
(66 x 50.8 cm)
27 1/2 x 21 1/2 inches (framed)
(AK#10037)



Dan McCarthy

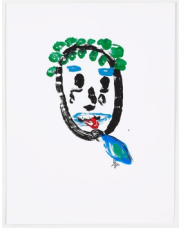
Untitled work on paper #19, 2013
signed and dated on the reverse
Acrylic paint on paper
26 x 20 inches
(66 x 50.8 cm)
27 1/2 x 21 1/2 inches (framed)
(AK#10038)



Dan McCarthy

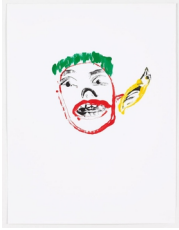
Untitled work on paper #21, 2013
signed and dated on the reverse
Acrylic paint on paper
26 x 20 inches
(66 x 50.8 cm)
27 1/2 x 21 1/2 inches (framed)
(AK#10040)

Anton Kern Gallery



Dan McCarthy

Untitled work on paper #27, 2013
signed and dated on the reverse
Acrylic paint on paper
26 x 20 inches
(66 x 50.8 cm)
27 1/2 x 21 1/2 inches (unframed)
(AK#10046)



Dan McCarthy

Untitled work on paper #28, 2013
signed and dated on the reverse
Acrylic paint on paper
26 x 20 inches
(66 x 50.8 cm)
27 1/2 x 21 1/2 inches (framed)
(AK#10047)



Dan McCarthy

Untitled Facepot #8, 2013
Labeled #8 signed and dated on bottom
Low fire clay and crystal glaze with enamel paint
16 x 12 inches
(40.6 x 30.5 cm)
(AK#10057)



Dan McCarthy

Untitled Facepot #11, 2013
Labeled #11 signed and dated on bottom
Low fire clay and glaze with gold luster
13 1/2 x 11 1/4 inches
(34.3 x 28.6 cm)
(AK#10060)



Dan McCarthy

Untitled Facepot #12, 2013
Labeled # 12 signed and dated on bottom
Low fire clay and glaze and silver luster
16 1/4 x 12 inches
(41.3 x 30.5 cm)
(AK#10061)



Dan McCarthy

Untitled Facepot #15, 2013
Labeled #15 and signed and dated on bottom
Low fire clay and glaze with gold luster
19 x 13 1/8 inches
(48.3 x 33.3 cm)
(AK#10064)

Anton Kern Gallery



Dan McCarthy

Untitled Facepot #16, 2013

Labeled #16 and signed and dated on bottom
Low fire clay and glaze with gold & silver luster
16 1/2 x 12 1/2 inches
(41.3 x 31.1 cm)
(AK#10065)



Dan McCarthy

Untitled Facepot #31, 2013

Labeled #31 and signed and dated on bottom
Low fire clay and crystal glaze with enamel paint
17 x 13 inches
(43.2 x 33 cm)
(AK#10066)



Dan McCarthy

Untitled Facepot #20, 2013

Labeled #20 and signed and dated on bottom
Low fire clay and glaze with silver and gold luster
16 x 10 inches
(40.6 x 25.4 cm)
(AK#10069)



Dan McCarthy

Untitled Facepot #21, 2013

Labeled #21 and signed and dated on bottom
Low fire clay and crystal glaze with enamel paint
17 1/2 x 12 3/4 inches
(44.5 x 32.4 cm)
(AK#10070)



Dan McCarthy

Untitled Facepot #22, 2013

Labeled #22 and signed and dated on bottom
Low fire clay and crystal glaze with enamel paint
16 x 13 inches
(40.6 x 33 cm)
(AK#10071)



Dan McCarthy

Untitled Facepot #23, 2013

Labeled #23 and signed and dated on bottom
Low fire clay and glaze with silver and gold luster
16 x 13 1/8 inches
(40.6 x 33.3 cm)
(AK#10072)

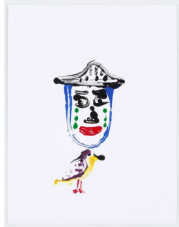
Anton Kern Gallery



Dan McCarthy

Untitled Facepot #27, 2013

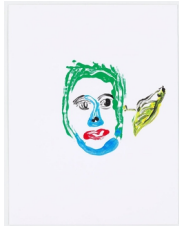
Labeled # 27 and signed and dated on bottom.
Low fire clay and crystal glaze with enamel paint
16 1/2 x 13 1/2 inches
(41.9 x 34.3 cm)
(AK#10076)



Dan McCarthy

Untitled work on paper #33, 2013

signed and dated on the reverse
Acrylic on claycoat paper
26 x 20 inches
(66 x 50.8 cm)
27 1/2 x 21 1/2 inches (framed)
(AK#10178)



Dan McCarthy

Untitled work on paper #34, 2013

signed and dated on the reverse
Acrylic on claycoat paper
26 x 20 inches
(66 x 50.8 cm)
27 1/2 x 21 1/2 inches (framed)
(AK#10179)



Dan McCarthy

Untitled work on paper #37, 2013

signed and dated on the reverse
Acrylic on claycoat paper
26 x 20 inches
(66 x 50.8 cm)
27 1/2 x 21 1/2 inches (framed)
(AK#10181)



Dan McCarthy

Untitled work on paper #38, 2013

signed and dated on the reverse
Acrylic on claycoat paper
26 x 20 inches
(66 x 50.8 cm)
27 1/2 x 21 1/2 inches (framed)
(AK#10182)

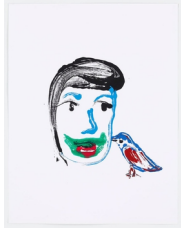


Dan McCarthy

Untitled work on paper #40, 2013

signed and dated on the reverse
Acrylic on claycoat paper
26 x 20 inches
(66 x 50.8 cm)
27 1/2 x 21 1/2 inches (framed)
(AK#10183)

Anton Kern Gallery



Dan McCarthy

Untitled work on paper #43, 2013
signed and dated on the reverse
Acrylic paint on paper
26 x 20 inches
(66 x 50.8 cm)
27 1/2 x 21 1/2 inches (framed)
(AK#10184)



Dan McCarthy

Untitled work on paper #44, 2013
signed and dated on the reverse
Acrylic on claycoat paper
26 x 20 inches
(66 x 50.8 cm)
27 1/2 x 21 1/2 inches (framed)
(AK#10185)



Dan McCarthy

Untitled work on paper #47, 2013
signed and dated on the reverse
Acrylic on claycoat paper
26 x 20 inches
(66 x 50.8 cm)
27 1/2 x 21 1/2 inches (framed)
(AK#10186)



Dan McCarthy

Untitled Facepot #33, 2013
Labeled #33 and signed and dated on bottom
Low fire clay and crystal glaze with enamel paint
16 x 11 1/4 inches
(40.6 x 28.6 cm)
(AK#10197)



Dan McCarthy

Untitled Facepot #34, 2013
Labeled #34 and signed and dated on bottom
Low fire clay and crystal glaze with enamel paint
18 x 10 inches
(45.7 x 25.4 cm)
(AK#10198)



Dan McCarthy

Untitled Facepot #35, 2013
Labeled #35 and signed and dated on bottom
Low fire clay and crystal glaze with enamel paint
17 1/2 x 10 inches
(44.5 x 25.4 cm)
(AK#10199)

Anton Kern Gallery



Dan McCarthy

Untitled Facepot #36, 2013

Labeled #36 and signed and dated on bottom
Low fire clay and crystal glaze with enamel paint
17 3/4 x 10 1/4 inches
(45.1 x 26 cm)
(AK#10200)



Dan McCarthy

Untitled Facepot #37, 2013

Labeled #37 and signed and dated on bottom
Low fire clay and crystal glaze with enamel paint
17 3/4 x 10 1/4 inches
(45.1 x 26 cm)
(AK#10201)



Dan McCarthy

Untitled Facepot #38, 2013

Labeled #38 and signed and dated on bottom
Low fire clay and crystal glaze with enamel paint
16 3/4 x 10 3/4 inches
(42.5 x 27.3 cm)
(AK#10202)



Dan McCarthy

Untitled Facepot #40, 2013

Labeled #40 and signed and dated on bottom
Low fire clay and crystal glaze with enamel paint
16 3/4 x 10 3/4 inches
(42.5 x 27.3 cm)
(AK#10203)



Dan McCarthy

Untitled Facepot #41, 2013

Labeled #41 and signed and dated on bottom
Low fire clay and crystal glaze with enamel paint
17 1/2 x 10 3/4 inches
(44.5 x 27.3 cm)
(AK#10204)



Dan McCarthy

Untitled Facepot #42, 2013

Labeled #42 and signed and dated on bottom
Low fire clay, crystal glaze and silver luster
16 x 11 3/4 inches
(40.6 x 29.8 cm)
(AK#10205)

Anton Kern Gallery



Dan McCarthy

Untitled Facepot #43, 2013

Labeled #43 and signed and dated on bottom

Low fire clay and crystal glaze with enamel paint

15 1/2 x 11 1/2 inches

(39.4 x 29.2 cm)

(AK#10206)



Dan McCarthy

Untitled Facepot #45, 2013

Labeled #45 and signed and dated on bottom

Low fire clay, crystal glaze, silver luster and enamel paint

16 x 9 1/2 inches

(40.6 x 24.1 cm)

(AK#10207)