

Anton Kern Gallery

Nicole Eisenman: *Maquette and Paper Pulp Works*
February 25 – April 3, 2021



Nicole Eisenman

Untitled, 2020

Paper pulp drawing with collage

Paper dimensions:

30 1/4 x 22 5/8 inches

(76,8 x 57.5 cm)

Framed dimensions:

35 x 27 1/4 x 1 5/8 inches

(88.9 x 69.2 x 4.1 cm)

(AK#18981)



Nicole Eisenman

Brooklyn Architecture 2020, 2020

Paper pulp drawing with collage

Paper dimensions:

35 x 29 3/4 inches

(88.9 x 75.6 cm)

Framed dimensions:

40 x 35 5/8 x 1 1/2 inches

(101.6 x 90.5 x 3.8 cm)

(AK#18999)



Nicole Eisenman

Untitled, 2018

Paper pulp drawing with collage

Paper dimensions:

18 1/2 x 16 inches

(47 x 40.6 cm)

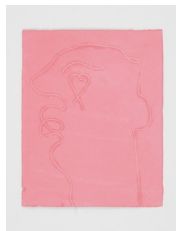
Framed dimensions:

25 1/2 x 21 1/2 x 1 1/2 inches

(65.1 x 69.5 x 3.8 cm)

(AK#18984)

Anton Kern Gallery



Nicole Eisenman

Untitled, 2019

Paper pulp drawing with string

Paper dimensions:

14 1/2 x 11 inches

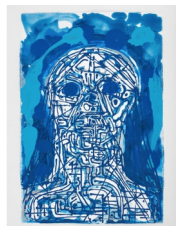
(36.8 x 27.9 cm)

Framed dimensions:

18 1/2 x 15 5/8 x 1 7/8 inches

(47 x 39.7 x 4.8 cm)

(AK#19006)



Nicole Eisenman

Untitled, 2019

Paper pulp drawing

Paper dimensions:

59 3/4 x 40 1/4 inches

(151.8 x 102.2 cm)

Framed dimensions:

65 x 45 1/4 x 1 7/8 inches

(165.1 x 115 x 4.8 cm)

(AK#18989)



Nicole Eisenman

Untitled, 2020

Paper pulp drawing with collage

Paper dimensions:

40 x 30 inches

(101.6 x 76.2 cm)

Framed dimensions:

44 3/4 x 34 1/4 x 1 1/2 inches

(113.7 x 87 x 3.8 cm)

(AK#18996)



Nicole Eisenman

Untitled, 2019

Paper pulp drawing

Paper dimensions:

53 1/2 x 39 3/4 inches

(135.9 x 101 cm)

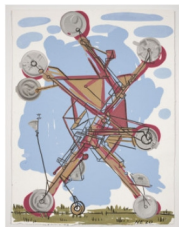
Framed dimensions:

Anton Kern Gallery

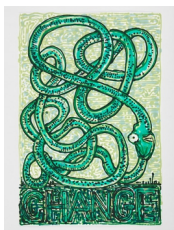
58 1/2 x 45 1/8 x 1 7/8 inches
(148.6 x 114.6 x 4.8 cm)
(AK#18990)



Nicole Eisenman
Hilma af Klint, 2020
Paper pulp drawing with collage and ink
Paper dimensions:
30 1/2 x 22 1/2 inches
(77.5 x 57.2 cm)
Framed dimensions:
35 1/4 x 27 1/4 x 1 1/2 inches
(89.5 x 69.2 x 3.8 cm)
(AK#18983)



Nicole Eisenman
Untitled, 2018
Paper pulp drawing with collage
Paper dimensions:
30 1/2 x 22 1/2 inches
(77.5 x 57.2 cm)
Framed dimensions:
35 1/8 x 27 3/8 x 1 1/2 inches
(89.2 x 69.5 x 3.8 cm)
(AK#19003)



Nicole Eisenman
Change, 2019
Paper pulp drawing
Paper dimensions:
59 3/4 x 39 3/4 inches
(151.8 x 101 cm)
Framed dimensions:
64 5/8 x 44 3/4 x 1 3/4 inches
(164.1 x 113.7 x 4.4 cm)
(AK#18992)



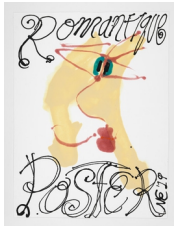
Nicole Eisenman
Nu Species 4 Erth 2, 2020
Paper pulp drawing with collage
Paper dimensions:

Anton Kern Gallery

59 3/4 x 40 inches
(151.8 x 101.6 cm)
Framed dimensions:
64 3/4 x 44 3/4 x 2 inches
(164.5 x 113.7 x 5.1 cm)
(AK#18982)



Nicole Eisenman
Untitled, 2019
Paper pulp drawing
Paper dimensions:
53 1/2 x 39 3/4 inches
(135.9 x 101 cm)
Framed dimensions:
58 1/2 x 44 5/8 x 1 7/8 inches
(148.6 x 113.3 x 4.8 cm)
(AK#18991)



Nicole Eisenman
Romantique Poster, 2019
Paper pulp drawing
Paper dimensions:
53 1/2 x 39 3/4 inches
(135.9 x 101 cm)
Framed dimensions:
58 3/8 x 44 1/2 x 2 inches
(148.3 x 113 x 5.1 cm)
(AK#18995)



Nicole Eisenman
Maquette: Sketch For a Fountain (Lying Down Figure, Reclining Figure, Sitting Figure, Standing Man), 2018
Bronze
Standing Man: 15 x 18 inch base
(with flowers: 41 3/4 inches high)
Sitting Figure: 18 1/2 x 15 inch base
(with flowers: 31 1/4 inches high)
Figure Lying Down: 39 1/2 x 18 inch base
(with flower: 30 1/4 inches)
Reclining Figure: 33 x 17 5/8 inch base

Anton Kern Gallery

(with flowers: 30 ¼ inches high)
Edition of 4 and 2 AP (#1/4)
(AK#15081R)



Nicole Eisenman

Untitled, 2020

Paper pulp drawing

Paper dimensions:

40 x 60 1/4 inches

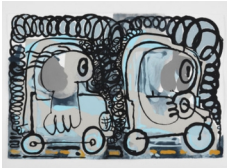
(101.6 x 153 cm)

Framed dimensions:

45 x 64 5/8 x 1 3/4 inches

(114.3 x 164.1 x 4.4 cm)

(AK#18993)



Nicole Eisenman

Untitled, 2019

Paper pulp drawing with ink

Paper dimensions:

39 3/4 x 60 1/4 inches

(101 x 153 cm)

Framed dimensions:

44 3/4 x 64 1/2 x 2 inches

(113.7 x 163.8 x 5.1 cm)

(AK#18994)