



David Shrigley

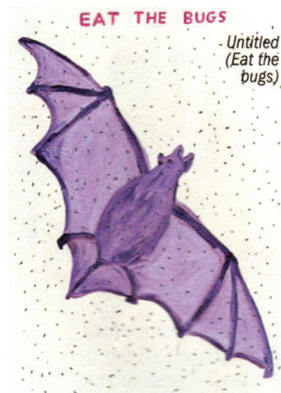
★★★★

Anton Kern Gallery, through May 23

Making sense seem like nonsense is one way to describe David Shrigley's faux-naïf work, which combines sweet childlike rendering with a sour, sardonic tone.

Here the space is salon hung with paintings, such as a crude, store-hours sign marked `CLOSED` for each day. In a POV video resembling an arcade game, a driver hurtles heedlessly past wretched souls along the highway, crying for help.

In Shrigley's world, whimsy



becomes torment, and black humor settles on innocence like coal dust on snow.—Howard Halle

THE BOTTOM LINE Naïveté becomes negative attitude.

66 TIMEOUT.COM/NEWYORK May 13-19, 2015